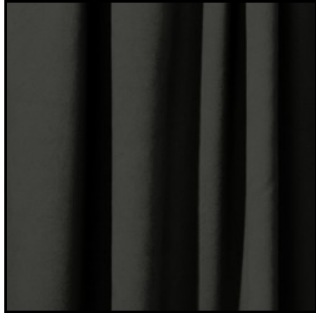
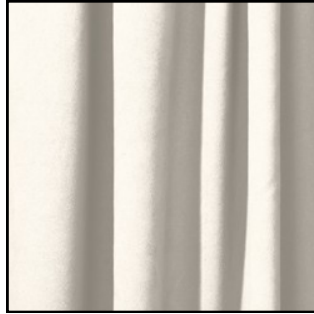




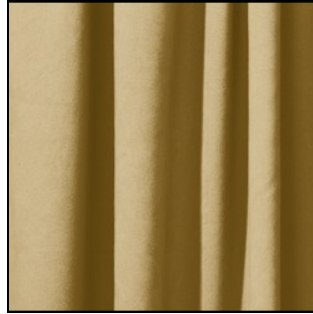
ENCORE™
100% POLYESTER
INHERENTLY FLAME RETARDANT
AVAILABLE IN 22oz/64" & 15oz/62"



BLACK



WHITE



BEIGE



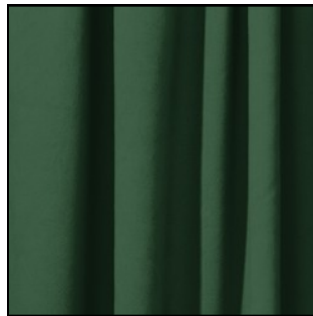
PEWTER



ESPRESSO



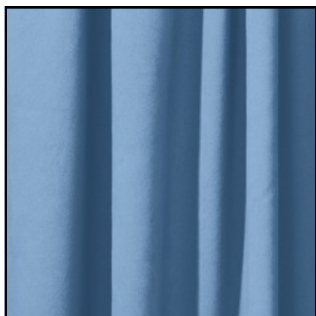
CORONA



CYPRESS



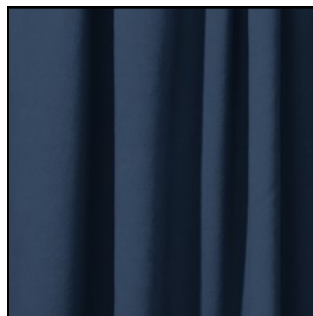
IRIS



ICE BLUE



ROYAL BLUE



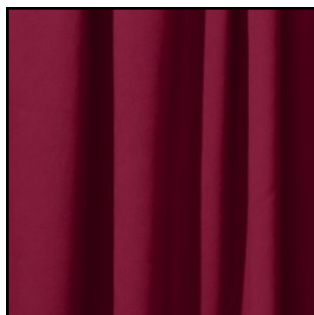
BERMUDA



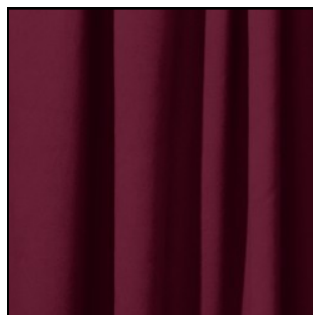
PROVINCIAL



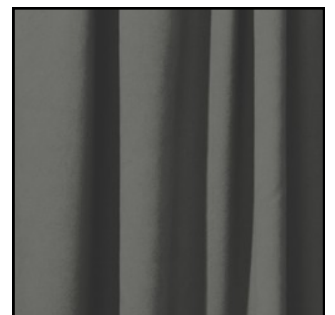
CRIMSON



PLUM



CABERNET



SLATE

All colors subject to dye lot variation.

ENCORE

FABRIC SPECIFICATIONS

QUALITY

22 oz VELOUR

15oz VELOUR

QUALITY	22 oz VELOUR	15oz VELOUR
COMPOSITION:	100% POLYESTER	100% POLYESTER
WIDTH:	64" (162 CM)	62" (157CM)
WEIGHT:	22 oz./yd.	15 oz./yd.
FINISH:	INHERENTLY FLAME RETARDANT	INHERENTLY FLAME RETARDANT
FLAME TESTING:	UFAC Class 1 NFPA 701—Small Scale (1989 ed.) NFPA 701—TM #1 (2007 ed.) Calif. Admin. Code Title 19 Reg.#F-521.01 NYC FD Reg.#5135	UFAC Class 1 NFPA 701—Small Scale (1989 ed.) NFPA 701—TM #1 (2007 ed.) Calif. Admin. Code Title 19 Reg.#F-521.01 NYC FD Reg.#5135
TEAR STRENGTH:		
TRAP (ASTM D5587)	Warp—32 lbs (142 N) Filling—52 lbs (231 N)	Warp—16 lbs (71 N) Filling—13 lbs (58N)
TONGUE (ASTM D2261)	Warp—5 lbs (23 N) Filling—12 lbs (53 N)	Warp—4 lbs (16 N) Filling—12 lbs (53 N)
TENSILE STRENGTH:		
GRAB (ASTM D5034)	Warp—60 lbs (266 N) Filling—147 lbs (653 N)	Warp—64 lbs (284 N) Filling—66 lbs (293 N)
STRIP (ASTM D5055)	Warp—23 lbs (102 N) Filling—100 lbs (444N)	Warp—36 lbs (160 N) Filling—40 lbs (178N)
ABRASION:		
WYZENBEEK (ASTM D3597)	Exceeds 15,000 Double Rubs	Exceeds 15,000 Double Rubs
MARTINDALE (ASTM D4966)	Exceeds 35,000 Cycles	Exceeds 35,000 Cycles
LIGHT FASTNESS:	40 to 80 hrs (varies by color)	40 to 80 hrs (varies by color)
(ASTM D3597, Xenon)		
CROCKING:	WET—3 to 5 (varies by color)	WET—3 to 5 (varies by color)
(AATCC 107)	DRY—3 to 5 (varies by color)	DRY—3 to 5 (varies by color)